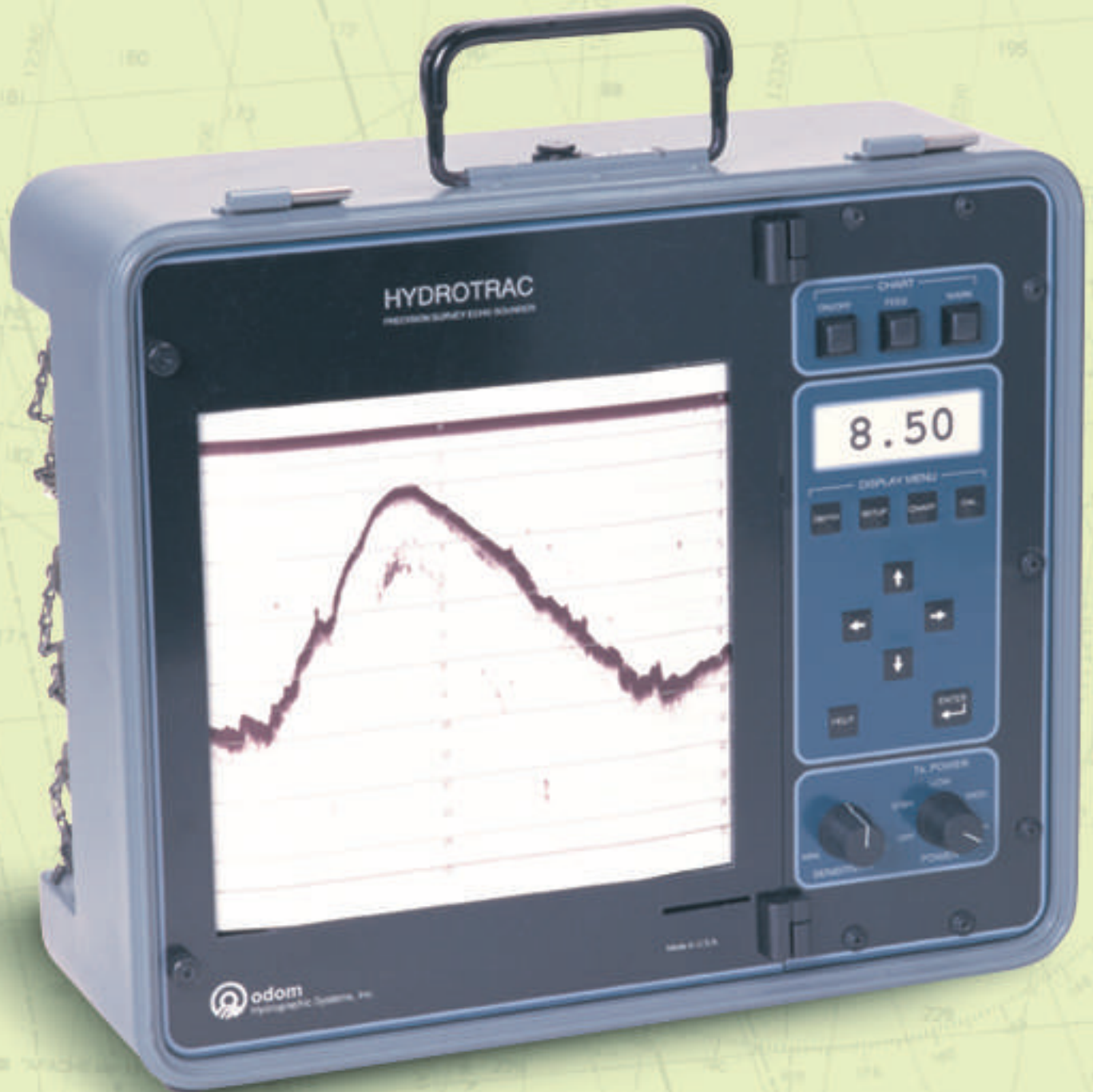


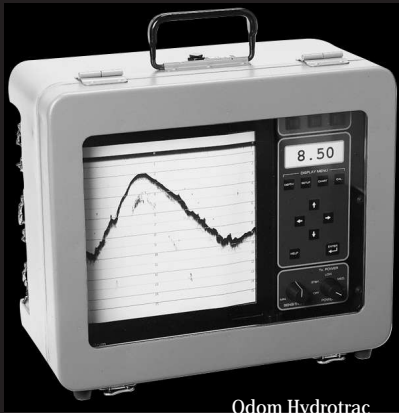
odom
HydrotracTM

PORTABLE SURVEY
ECHO SOUNDER



**AVAILABLE WITH
BUILT-IN DGPS**





Odom Hydrotrac
featuring full waterproof cover.

odom
Hydrotrac™ was specifically designed to work on small survey boats and inflatable water craft in rugged conditions such as surf zones. While being compact and portable, it is fully waterproof during operation. Hydrotrac incorporates the thermal printer and advanced features of odom's established echotrac line of echo sounders and is competitively priced.

SPECIFICATIONS

Frequency

- 200 kHz (standard)
- 210, 40 & 33 kHz (optional)

Output Power

- 600 Watts

Power Requirement

- 11-28 VDC (standard)
- 110/220 VAC (optional)

Ports

- 2 (RS232 or RS422)

FEATURES

- 8.5" / 216 mm Thermal Printer (fax paper)
- LCD Display (1" high)
- Sealed Keypad Controls
- Manual/Remote Mark Command
- Auto Scale Change (phasing)
- GPS Input
- Heave Input from Motion Sensor
- Annotation Printed on Chart
- Auto Pulse Length, AGC & TVG
- Output: NMEA, ECHOTRAC, DESO 25, etc.
- Waterproof
- Lightweight (24.8 lbs. / 11.25 kg.)
- Small Size (14.5 h x 16.5 w x 8.0 d inches) (36.83 h x 41.91 w x 20.32 d cm)
- Accuracy: 200 kHz-1cm±0.1% of depth value (corrected for sound velocity)
33 kHz-10cm±0.1% of depth value (corrected for sound velocity)

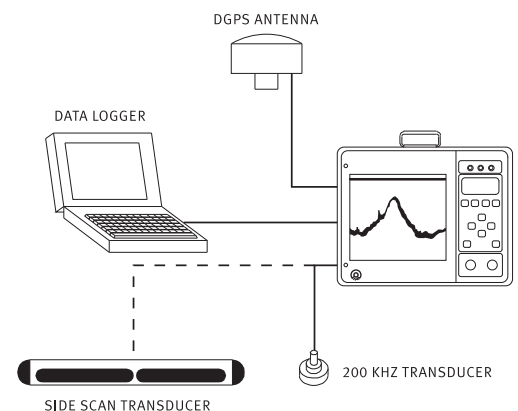
- Resolution: 0.1 ft. / .01 meters
- Fix Mark Print Date, Time, Fix No., Depth (and GPS position if input)
- Optional 200 kHz Side Scan Transducer
- Optional Built-in DGPS Beacon Receiver Including Combined Antenna
- Optional Left-Right Indicator
- Flash Memory Upgrade
- Built-in Simulator

CONTROLS

- Sensitivity
- Chart On/Off & Advance
- Event Mark (internal selectable timer)
- Transmit Power (600/160/35 watts)

TOUCH PAD SETTINGS

- Draft, Velocity & Tide Inputs
- Time & Date
- Scale Width & Center
- Blanking
- Calibration Gate
- Alarm Filter
- Fix Interval
- Chart Speed
- HELP Function (prints on chart)
- Current Parameters (prints on chart)



odom
HYDROGRAPHIC SYSTEMS

8178 GSRI Avenue Building B

Baton Rouge, Louisiana 70820-7405 USA

E-mail: email@odomhydrographic.com

<http://www.odomhydrographic.com>

ODOM HYDROTRAC™



odom
HYDROGRAPHIC SYSTEMS

- IDEAL FOR SMALL BOATS AND HARSH CONDITIONS
- FREQUENCY AGILE
- HIGH RESOLUTION THERMAL PRINTER
- INTERNAL DGPS (OPTIONAL)
- WATERPROOF
- FLASH UPGRADEABLE
- SIDE SCAN OPTION



**SINGLE FREQUENCY PORTABLE
HYDROGRAPHIC ECHO SOUNDER**

ODOM HYDROTRAC™

Specifically designed for work in less-than-ideal circumstances on small survey boats and inflatable watercraft, the **Hydrotrac™** offers compact portability and the confidence of knowing you're using an Odom product. It is completely waterproof and comes equipped with the same advanced features you've come to trust and depend on in Odom echo sounders.



Buy Odom – invest in your peace of mind.

S P E C I F I C A T I O N S

Environmental Operating Conditions:

- 0 – 50 C

Frequency Agile

- Operator selectable – 24, 33, 40, 200, 210 and 340 kHz

Output Power

- 600 watts

Power Requirement

- 11-28 V DC (standard)
- 110/220 V AC (optional)

Communication

- 2 RS232 or RS422 ports

Depth Range

- MAX = 600 m/1968 ft

Resolution

- 0.1 ft/0.01 m

Accuracy

- 8.5 in/216 mm thermal printer (fax paper)
- LCD display (1 in high)
- Sealed keypad controls

Weight

- (24.8 lbs/11.25 kg)

Dimensions

- (14.5 h x 16.5 w x 8 d in or 36.83 h x 41.91 w x 20.32 d cm)

Controls

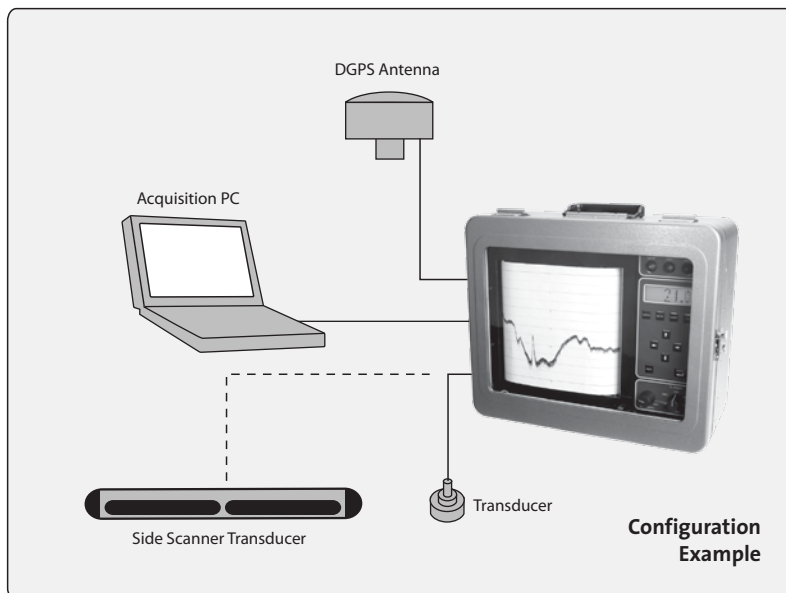
- Sensitivity
- Chart on/off and advance
- Event mark (internal selectable timer)
- Transmit power (high/med/low)

Touch Pad Settings

- Draft, velocity and tide inputs
- Time and date
- Scale width and center
- Blanking
- Calibration gate
- Alarm filter
- Fix interval
- Chart speed
- HELP function (prints on chart)
- Current parameters (prints on chart)

Features

- Manual/remote mark command
- Auto scale change (phasing)
- GPS input
- Heave input from motion sensor
- Annotation printed on chart
- Auto pulse length, TVG
- Output: NMEA, ECHOTRAC, DESO 25, etc.
- Waterproof (with cover in place)
- Accuracy: 200 kHz – 1 cm 0.1% of depth value (corrected for sound velocity); 33 kHz – 10 cm 0.1% of depth value (corrected for sound velocity)
- Fix mark annotation: date, time, fix no., depth (and GPS if input)
- Optional 200 kHz or 340 kHz side scan transducer
- Optional built-in DGPS
- Optional remote display
- Flash memory upgradeable
- Built-in simulator
- Software included: Comlog
- Operation and installation manuals provided on CD



odom
HYDROGRAPHIC SYSTEMS

1450 Seaboard Avenue
Baton Rouge, Louisiana 70810-6261 USA
E-mail: email@odomhydrographic.com
www.odomhydrographic.com