

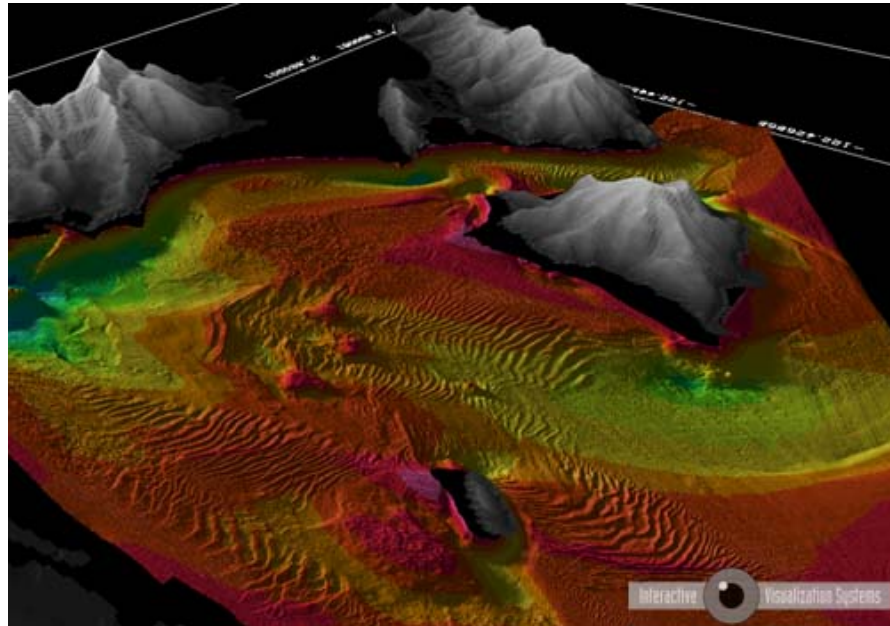
IVS 3D Announces Availability of HS2 Format!

Fledermaus Professional Release 6.1.4 has added the ability to read multibeam data that is in the HS2 format used by the HYSWEEP® module of HYPACK®.

With the addition of the HS2 reader to our common parsing library, multiple Fledermaus applications can now be used to read HYSWEEP® data. Please note that HYPACK® only provides libraries for a Windows environment.

These include:

- ◆ OmniViewer for examining the contents of data files
- ◆ AvgGrid for the creation of gridded files
- ◆ PFMDirect for the creation of PFM data sets that can be used for area based editing.



With these new Fledermaus capabilities, there is no need for complicated time consuming data conversion processes. The hydrographer or engineer immediately has the ability to visualize efficiently and meaningfully their multibeam data set gathered that day.

The HS2 multibeam data format flows seamlessly into further processing using the Area Based Editing or CUBE function within Fledermaus. Once in Fledermaus, resulting scene files have fully customizable features such as difference surfaces, profiles or digital terrain models with shading and contouring in a fraction of the time it would normally take.

“3D Visualization - more than just a pretty picture”

325 Corporate Dr., Suite 175- Portsmouth, NH 03801 USA - Tel: (603) 431-1773 - Fax: (603) 766-0485
Toll Free: 1-866-601-9126 - Email: info@ivs3d.com - Web: www.ivs3d.com

HYSWEEP® is an optional module and a registered trademark of HYPACK® MAX

IVS 3D FLEDERMAUS SUITE IMPORTS ARCVIEW GRIDS AND ESRI SHAPE FILES.

Fledermaus Standard and Professional have the capability to read, import and export data produced in ESRI's ArcView package.

Specifically, Fledermaus Suite can import ArcView ASCII grids, ArcView Binary Grids and ESRI Shape files (*.shp). Fledermaus can export data directly to ArcView ASCII grid format.

Within the Fledermaus Suite, various applications import directly ESRI format files, these include:

- ◆ DMagic directly imports as surfaces ArcView ASCII Grids, ArcView Binary Grids. DMagic directly exports a surface as an ArcView Grid.
- ◆ Fledermaus directly imports ESRI Arcview shape files (*.shp) into scenes

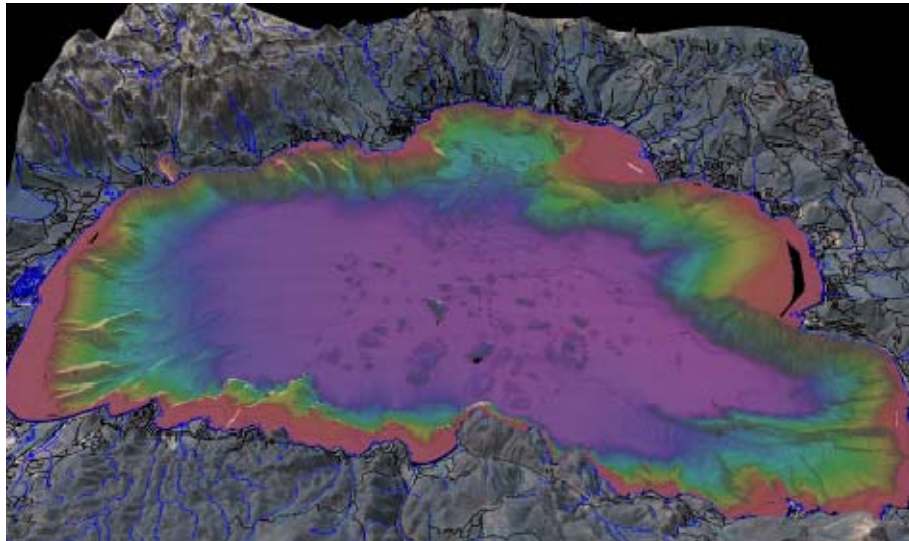


Figure 1. A scene created in Fledermaus of Lake Tahoe from ESRI shape files, USGS topography and bathymetry, and remote sensor image files. (Source: SCRIPPS)

Fledermaus enables you to bring together, in one scene, grids and surfaces in many formats, creating a 3 dimensional environment. Into this 3D environment one can incorporate point, line, polygon, and point cloud data. One can drape over the topographic surfaces images such as aerial photographs or landsat. Additionally, in the vertical plane other images may be combined in the scene including seismic and sub-bottom profiles.

The strength of the Fledermaus is its rendering engine and 3D visualization environment for analysis or presentation.

“3D Visualization – more than just a pretty picture”

Data Formats Supported by Fledermaus

Gridded Data Imports

| | |
|----------------------|-----------------------------|
| ArcView Binary Grid | Multi-Column ASCII |
| ER Mapper Grid | Etopo5 Database |
| Fugro GRI | Grass DTM |
| Caris Base Surface | NOAA Gravity |
| Predicted Topography | Surfer ASCII Binary Grid |
| Gridded ASCII | DTED Grid |
| Etopo2 Database | Final Survey Grid (NAVO) |
| GMT GRD | GUTM Grid |
| ISIS Grid | OMG R4/MOS |
| Raw Binary Grid | USGS DEM |
| | BAG/Open Navigation Surface |

Gridded Export Formats

| | |
|--------------------|---------------------|
| ASCII Grid | Generic Binary Grid |
| ASCII Arcview Grid | GMT Grid |

Point Data Imports

| Format | Read | Unload | Write |
|------------------------|------|--------|-------|
| HDGS (CARIS) - Windows | | | |
| Only | x | x | |
| GSF | x | x | |
| NEPTUNE (Simrad) | x | x | |
| ASCII XYZ | x | x | x |
| HTF (RAN) | x | x | |
| SHOALS OUT (Optech) | x | x | |
| SHOALS HOF (Optech) | x | x | |
| SHOALS TOF (Optech) | x | x | |
| SHOALS ABH (Optech) | x | x | |
| C&C Binary XYZ (C&C) | x | x | x |
| C&C Trace (C&C) | x | | |
| OMG MERGE (UNB) | x | x | |
| SURF (Atlas) | x | x | |
| FAU / FAU2 | x | x | |
| STB Binary (Fugro) | x | x | x |
| LAS 1.2 | x | | |
| PIVOT (SHOM) | x | | |
| B93 (NGA) | x | x | |
| HS2 (Hypack) - Windows | | | |
| Only | x | x | |
| BDI (SMA) | x | x | x |
| Lidar Comprehensive | x | | |
| L3 XSE | x | | |

“3D Visualization – more than just a pretty picture”